

**For Lease**

# Medical/General Office Space

3810 W. Bounous Wichita, KS

## Property Information:

Space Available  
**4,000 SF**

Lease Rate  
**\$2,950/Month**

Lease Type  
**Modified Gross**

Landlord

Responsibilities  
**Taxes, Insurance,  
Roof, & Structure**



**For Information  
Contact:**

**Carl Hebert, CCIM**  
(316) 618-1100  
cjhebert@insitere.com

**InSite Real Estate Group**  
608 W. Douglas, Suite 106  
Wichita, KS 67203



## Amenities

**STAND ALONE** Facility  
**AMAZING** Pole Signage w/ West St. Visibility  
**ESTABLISHED** Commercial Trade Area  
**HIGH QUALITY** Finishes Throughout  
**CONFIGURED** for Medical Use - Easily Convertible to  
General Office  
**POTENTIAL** Office/Warehouse Conversion  
**GREAT** Highway Access to Kellogg (US-54) & I-235  
**WELL MAINTAINED** Property

**Potential Uses** Medical Lab, Staffing Agency, Employer Drug Testing  
Facility, Genetic Testing Lab, Service Providers

**Area Businesses** Exacta Aerospace, Harper Trucks, Kaman Composites, 3P  
Processing, Foley Equipment, The Atlas Group, Wichita Sheet Metal Supply

**InSite**  
REAL • ESTATE • GROUP

**For Lease**

# Medical/General Office Space

3810 W. Bounous Wichita, KS

## Property Information:

Space Available  
4,000 SF

Lease Rate  
\$2,950/Month

Lease Type  
Modified Gross

Landlord

Responsibilities  
Taxes, Insurance,  
Roof, & Structure

## For Information Contact:

**Carl Hebert, CCIM**  
(316) 618-1100  
cjhebert@insitere.com

InSite Real Estate Group  
608 W. Douglas, Suite 106  
Wichita, KS 67203



**Potential Uses** Medical Lab, Staffing Agency, Employer Drug Testing Facility, Genetic Testing Lab, Service Providers

**Area Businesses** Exacta Aerospace, Harper Trucks, Kaman Composites, 3P Processing, Foley Equipment, The Atlas Group, Wichita Sheet Metal Supply

**For Lease**

# Medical/General Office Space

3810 W. Bounous Wichita, KS

## Property Information:

Space Available

**4,000 SF**

Lease Rate

**\$2,950/Month**

Lease Type

**Modified Gross**

Landlord

Responsibilities

**Taxes, Insurance,  
Roof, & Structure**

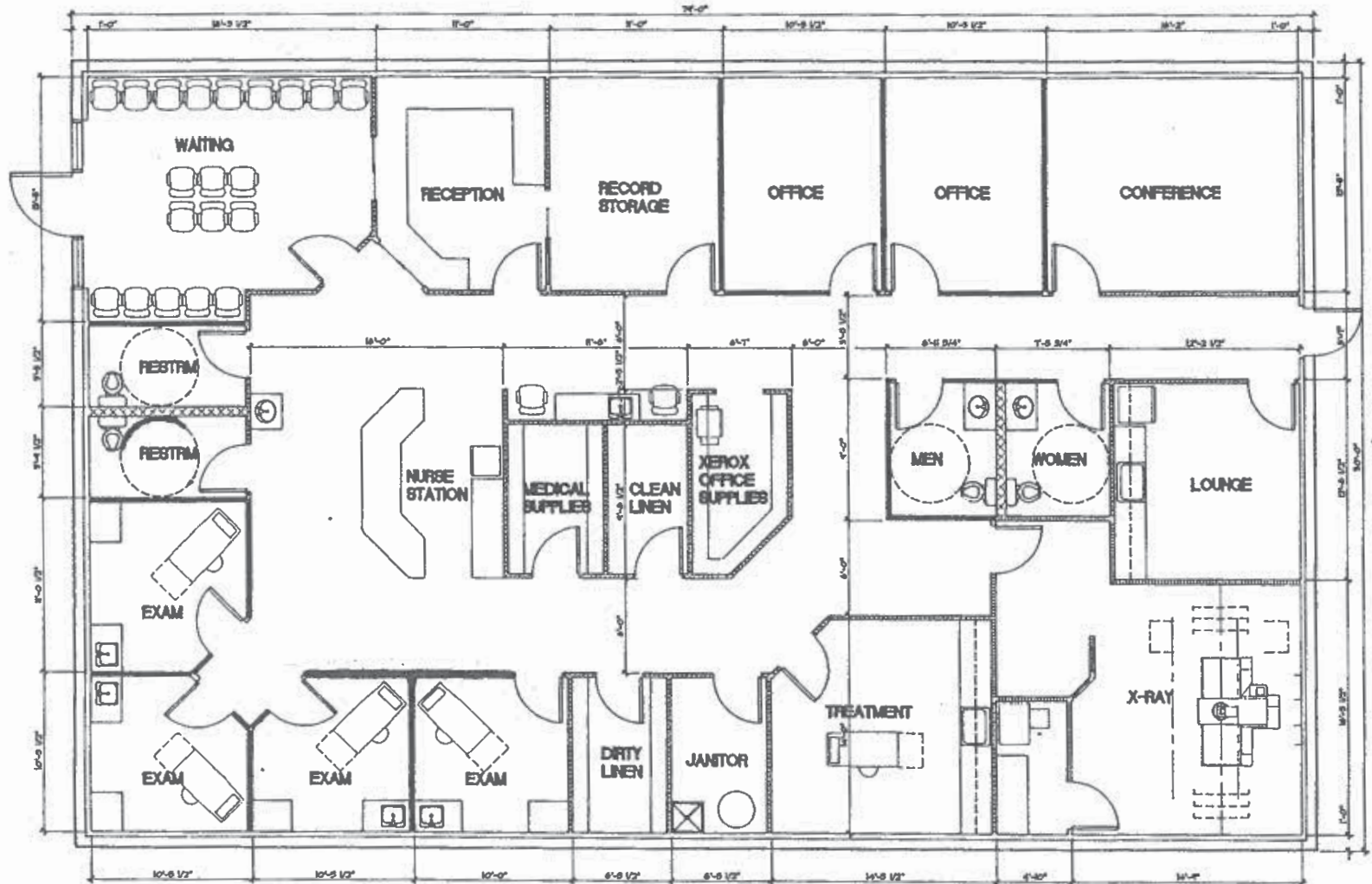
**For Information  
Contact:**

**Carl Hebert, CCIM**

(316) 618-1100

[cjhebert@insitere.com](mailto:cjhebert@insitere.com)

**InSite Real Estate Group**  
608 W. Douglas, Suite 106  
Wichita, KS 67203



**Potential Uses** Medical Lab, Staffing Agency, Employer Drug Testing Facility, Genetic Testing Lab, Service Providers

**Area Businesses** Exacta Aerospace, Harper Trucks, Kaman Composites, 3P Processing, Foley Equipment, The Atlas Group, Wichita Sheet Metal Supply

**InSite**  
REAL • ESTATE • GROUP

